

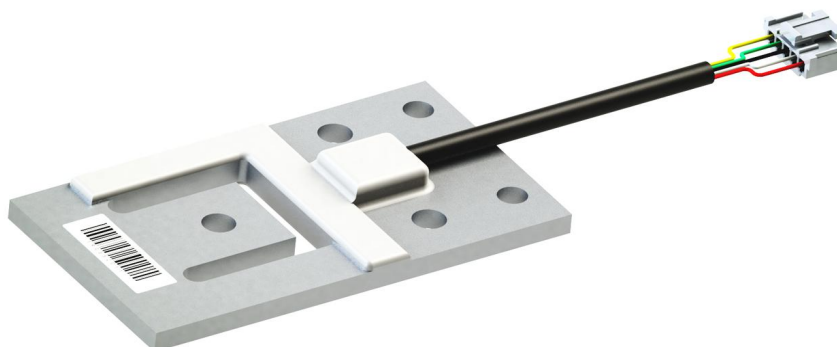
# Model PB30

## Planar beam load cell

Capacity: 3.75kg to 300kg

Mass production Monthly production capacity 150,000pcs

**Materontek**  
Sensing and Internet of Things



The PB30 planar beam is a load cell for use in ultra-low profile weighing equipment. The planar beam is designed to be used as an alternative to a single point load cell and 1 or 4 units are required for each application. The PB30 is available in a wide range of capacities from 3.75kg through to 300kg.

### Features

- ▣ Capacity: 3.75kg....300kg
- ▣ Material: Aluminum
- ▣ Protection class: IP65
- ▣ Variety of electrical connections are available

### Application

- ▣ Bench scales
- ▣ Medical equipment
- ▣ Mobile phone test instruments
- ▣ Test and Measurement Applications

### Technical data

#### Measuring range

Capacity [kg]	3.75	7.5	10	15	30	75	150	300
---------------	------	-----	----	----	----	----	-----	-----

#### Performance

Combined Error	±0.05 %FS
Operating Temperature Range	-10 to 40 °C
Temp. Coeff - Zero	±0.1 %FS/10°C
Temp. Coeff - Span	±0.05 %FS/10°C
Safe Overload	150 %FS
Ultimate Overload	200 %FS

#### Electrical @25°C

Rated Sensitivity	(0.9~2)±10% mV/V	<b>Optional the output standardisation 0.9±0.3%.</b>
Zero balance	±2%FS	
Excitation Voltage	6 to 10VDC	
Insulation Resistance	2000 MΩ@50VDC	
Input Resistance[Ω]	1100±50	
Output Resistance[Ω]	1000±10	
Creep[5min.]	0.1%FS	
Cable Specification	4 conductor ribbon cable/4 conductor shielded cable	

#### Physical Specifications

Material	Aluminum
Protection	IP65
Weight	~60g(30kg)

The listed specifications and dimensions are subject to change without prior notice

# Model PB30

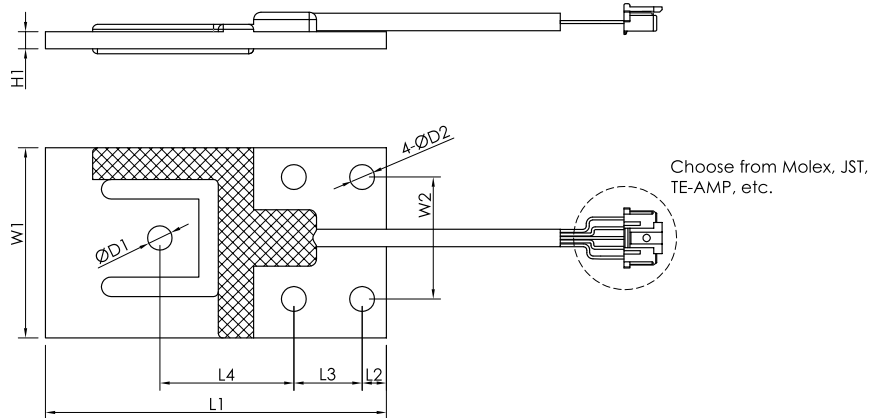
## Planar beam load cell

Capacity: 3.75kg to 300kg

Mass production Monthly production capacity 150,000pcs

**Materontek**  
Sensing and Internet of Things

Dimensions (All dimensions in mm)



Capacity[kg]	L1	L2	L3	L4	W1	W2	H1	D1	D2
3.75	70	5	14	27.5	39	27	2	5.1	5.1
7.5	70	5	14	27.5	39	27	2.2	5.1	5.1
10	70	5	14	27.5	39	27	2.5	5.1	5.1
15	70	5	14	27.5	39	27	3	5.1	5.1
30	70	5	14	27.5	39	27	3.5	5.1	5.1
75	84.5	6.5	15	34	55	30	7.5	7	6.5
150	84.5	6.5	15	34	55	30	7.5	7	6.5
300	84.5	6.5	15	34	55	30	7.5	7	6.5

### Ordering code

Model	Capacity	Sensitivity	Combined Error	Electrical interfacel	Customized Spec's
<b>PB30</b>	<b>01</b> 3.75	<b>A</b> (0.9~2) mV/V	<b>01</b> 0.05%FS	<b>M1</b> 4 conductor ribbon cable, L=0.5m	
	<b>02</b> 7.5	<b>B</b> (0.9±0.3%) mV/V		<b>M2</b> 4 conductor shielded cable, L=0.5m	
	<b>03</b> 10			<b>M3</b> 4 conductor ribbon cable with connector	
	<b>04</b> 15			<b>M4</b> 4 conductor shielded cable with connector	
	<b>05</b> 30			When ordering, please specify Molex, JST, TE-AMP, etc.	
	<b>06</b> 75				
	<b>07</b> 150				
	<b>08</b> 300				